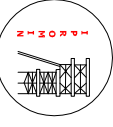



STREAM No. / CIRCUIT	DESCRIPTION / DESCRIERE	Unit / U.M.	243	244	245	341	431	432	434	435	436	444	448	451	452	453	454	455	456	457
	Solids / Solide	1/h												0						
	Liquids / Lichite	1/h	7.1	7.1	0.00		44.8	44.8	7.4	0.4	0.0	0.3	65.5	1.9	0.1	0.3	0.2	0.0	0.4	
	Slurry / Tăbușeala	m ³ /h	7.1	7.1	0.00	1.6	40.0	40.0	6.6	0.4	0.0	0.3	58.5	0.0	1.6	0.1	0.2	0.2	0.0	
	Solids / Solide	SG					0.00													
	Strength / Concentrație	%w/w	0.00	0.00	0.00		20 (w/v)	20 (w/v)	20 (w/v)	20 (w/v)	20 (w/v)	20 (w/v)	20 (w/v)	0.0	20.0	20.0	20.0	20.0	20.0	
	Slurry / Tăbușeala	SG	1.00	1.00	1.00	1.00	1.12	1.12	1.12	1.12	1.12	1.12	1.12	0.00	1.20	1.20	1.20	1.20	1.20	



S.C. IPROMIN S.A.
BUCUREȘTI



GABRIEL
TECHNOLOGICE

Elaborated by / Elaborat de: Ing. Nicolai Mircea Cristian

Verified by / Verificat de: Ing. Gabriel Neamtu

Manager project / Manager proiect: Ing. Sorin Berchimis

Note / Note: Information provided by FMGC / datele au fost puse la dispozitie de beneficiar

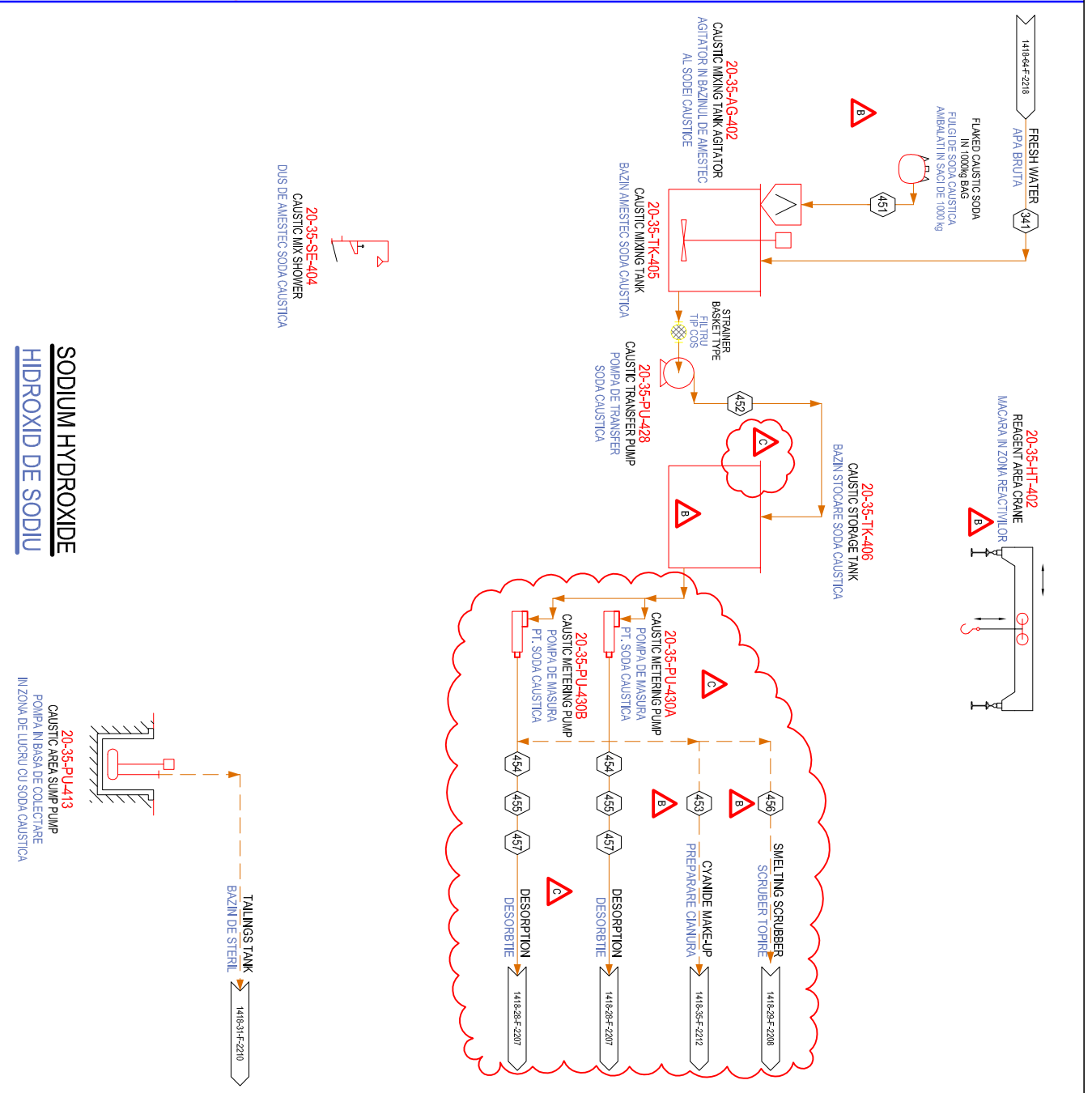
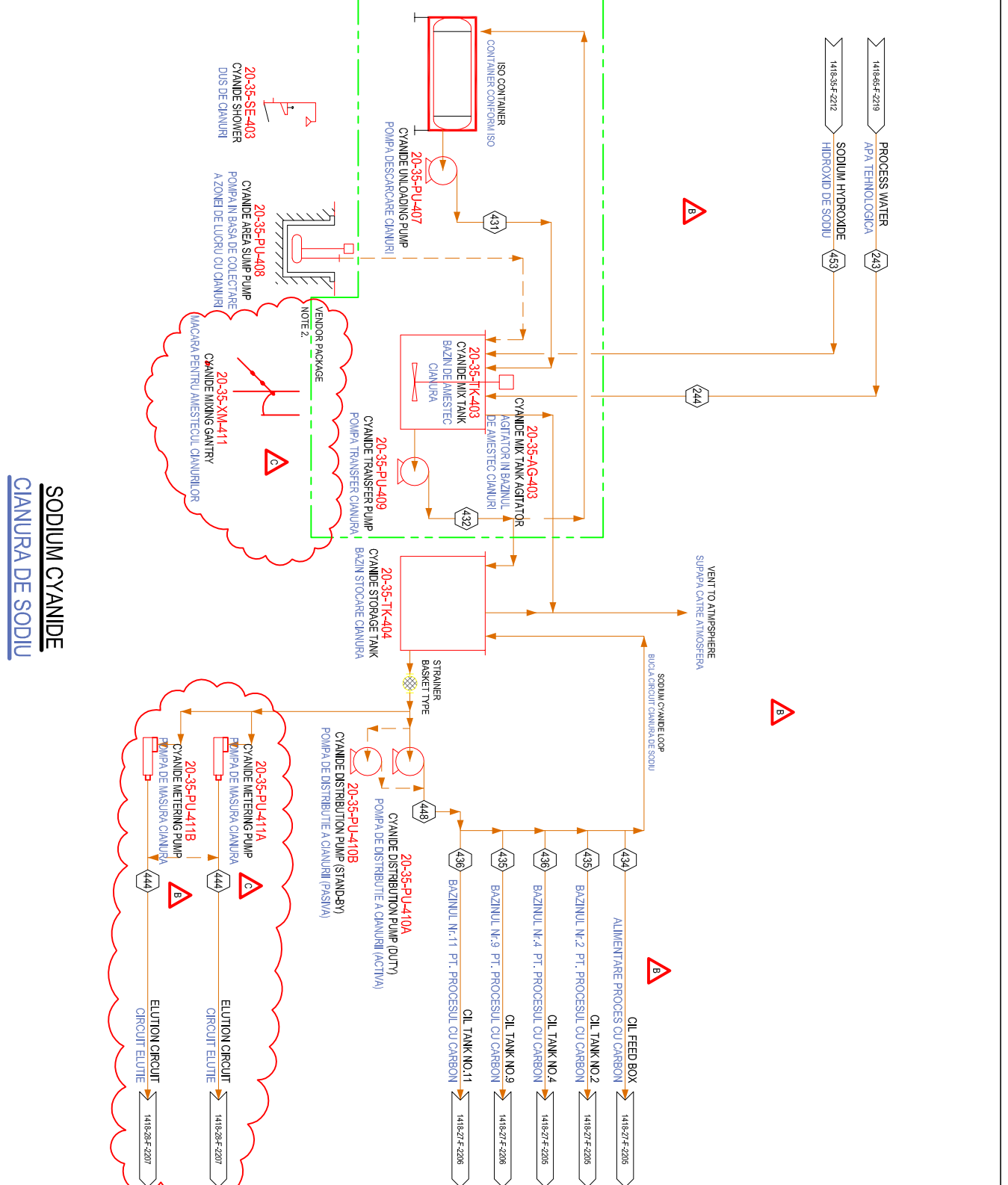
Scale / Scară: Title / Denumire Plan: REAGENTS: SODIUM CYANIDE & SODIUM HYDROXIDE PROCESS FLOW DIAGRAM / REACTIVI: CIANURA DE SODIU SI HIDROXIDUL DE SODIU SCHEMA TEHNOLOGICA

Owner / Beneficiar: S.C. ROSIA MONTANA GOLD CORPORATION S.A.

Documentation / Documentație: ENVIRONMENTAL IMPACT ASSESSMENT REPORT / RAPORT DE EVALUARE A IMPACTULUI ASUPRA MEDIULUI

Chapter / Capitol 2 : TECHNOLOGICAL PROCESSES / PROCESE

Exhibit / Planșa: 2.26



SODIUM CYANIDE
CIANURA DE SODIU

SODIUM HYDROXIDE
HIDROXID DE SODIU

- NOTES:**
- 1. DASHED LINE INDICATES INTERMITTENT OR ALTERNATIVE FLOW OR FUTURE INSTALLATION.
 - 2. CYANIDE MAKE-UP IS SUPPLIED BY CYPPLUS. A SECOND UNIT MAY BE NEEDED. DETAILS TO BE CONFIRMED.

1. LINIA INTERRUPTA INDICA UN FLUX INTERMITTENT SAU ALTERNATIV ORI O INSTALATIE VIITOARE.

2. UNITATEA DE PREPARARE A CIANURII ESTE LIVRATA DE CYPPLUS. ESTE POSIBIL SA FIE NECESARA SI O A DOUA UNITATE. DETALIILE VOR FI CLARIFICATE.